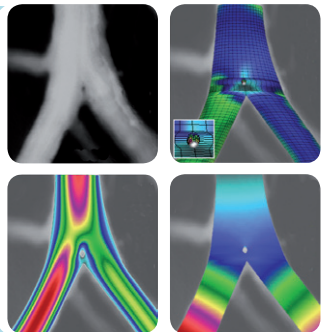
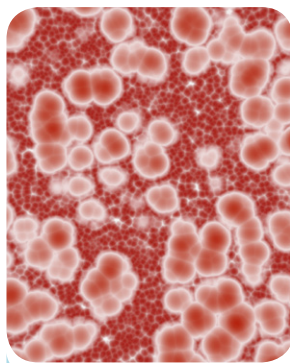
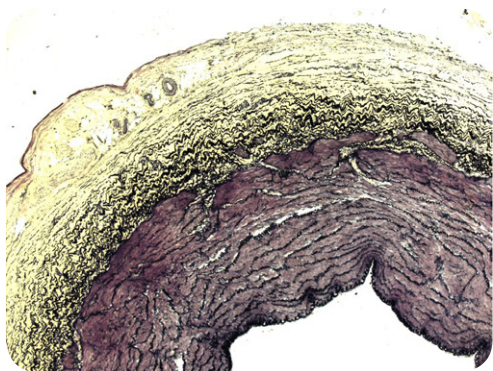


Open Access  
Cardiovascular Disorders  
Journals



OPEN  
ACCESS



# Open access cardiovascular disorders journals

BioMed Central publishes a collection of peer-reviewed, open access journals, many of which publish content related to cardiovascular disorders. All journals are included in PubMed. For further details on any journal below, plus a full list of Editorial Board members, please visit the journal's website.



**CARDIO  
VASCULAR  
DIABETOLOGY**

[www.cardiab.com](http://www.cardiab.com)

[cvdofice@sheba.health.gov.il](mailto:cvdofice@sheba.health.gov.il)

Editors-in-Chief: Enrique Z Fisman (Israel),  
Alexander Tenenbaum (Israel)

Impact Factor: 2.72

*Cardiovascular Diabetology* is an open access, peer-reviewed, online journal that considers manuscripts on all aspects of the diabetes/cardiovascular interrelationship and the dysmetabolic syndrome; this includes genetic, experimental, clinical, pharmacological, epidemiological, molecular biology and laboratory research.

*Cardiovascular Diabetology* is indexed by PubMed, PubMed Central, Medline, Thomson Reuters (ISI), CAS, EMBASE, Scopus, Current Contents, Index Copernicus, OAlster, Scirus, Zetoc and Google Scholar.



**Journal of Cardiovascular  
Magnetic Resonance**

<http://jcmr-online.com>

[jcmr@ic.ac.uk](mailto:jcmr@ic.ac.uk)

Editor-in-Chief: Dudley Pennell (UK)

Impact Factor: 4.33

*Journal of Cardiovascular Magnetic Resonance*, the official journal of the Society for Cardiovascular Magnetic Resonance, is an open access, online journal that publishes articles on all aspects of basic and clinical research on the design, development, manufacture, and evaluation of magnetic resonance methods applied to the cardiovascular system.

*Journal of Cardiovascular Magnetic Resonance* is indexed by PubMed, PubMed Central, Medline, Thomson Reuters (ISI), Cinahl, EMBASE, Scopus and Google Scholar.



**BMC  
Cardiovascular Disorders**

[www.biomedcentral.com/bmccardiovascular](http://www.biomedcentral.com/bmccardiovascular)

[editorial@biomedcentral.com](mailto:editorial@biomedcentral.com)

Impact Factor: 2.02

*BMC Cardiovascular Disorders* is an open access, peer-reviewed journal that considers articles on all aspects of the prevention, diagnosis and management of disorders of the heart and circulatory system, as well as related molecular and cell biology, genetics, pathophysiology, epidemiology, and controlled trials.

*BMC Cardiovascular Disorders* is indexed by PubMed, MEDLINE, CAS, EMBASE, Scopus, CABI, Thomson Reuters (ISI) and Google Scholar.



**CARDIOVASCULAR  
ULTRASOUND**

[www.cardiovascularultrasound.com](http://www.cardiovascularultrasound.com)

[rosas@ifc.cnr.it](mailto:rosas@ifc.cnr.it)

Editor-in-Chief: Eugenio Picano (Italy)

Impact Factor: 1.56

*Cardiovascular Ultrasound* is an open access, peer-reviewed, online journal covering clinical, technological, experimental, biological, and molecular aspects of ultrasound applications in cardiovascular physiology and disease.

*Cardiovascular Ultrasound* is indexed by PubMed, PubMed Central, Medline, Thomson Reuters (ISI), EMBASE, Scopus, Index Copernicus, EMCARE, OAlster, Scirus, Citebase, Medscape, Zetoc and Google Scholar.



**JCTS** JOURNAL OF  
CARDIOTHORACIC SURGERY

[www.cardiothoracicsurgery.org](http://www.cardiothoracicsurgery.org)

zamvarv@hotmail.com

Editors-in-Chief: Vipin Zamvar (UK), David Taggart (UK)

Impact Factor: 0.91

*Journal of Cardiothoracic Surgery* is an open access, peer-reviewed online journal that encompasses all aspects of research in the field of cardiothoracic surgery.

*Journal of Cardiothoracic Surgery* is indexed by PubMed, PubMed Central, Medline, Thomson Reuters (ISI), Scopus, Index Copernicus, OAlster, Scirus, Citebase, Socolar, EMCARE, Zetoc and Google Scholar.



**THROMBOSIS  
JOURNAL**

[www.thrombosisjournal.com](http://www.thrombosisjournal.com)

thrombosisjournal@speedy.com.ar

Editor-in-Chief: Raul Altman (Argentina)

Unofficial Impact Factor: 1.00

*Thrombosis Journal* is an open access, peer-reviewed, online journal that publishes biologically significant findings with clinical relevance in the field of acute and chronic vascular thrombotic disease.

*Thrombosis Journal* is indexed by PubMed, PubMed Central, CAS, EMBASE, Scopus, Index Copernicus, OAlster, Scirus, Citebase, Socolar, Zetoc and Google Scholar.



**BMC  
Blood Disorders**

[www.biomedcentral.com/bmcblooddisord](http://www.biomedcentral.com/bmcblooddisord)

editorial@biomedcentral.com

*BMC Blood Disorders* is an open access, peer-reviewed journal that considers articles on all aspects of the prevention, diagnosis and management of blood disorders, as well as related molecular genetics, pathophysiology, and epidemiology.

*BMC Blood Disorders* is indexed by PubMed, CAS, EMBASE, Scopus, CABI and Google Scholar.



**BMC  
Medical Imaging**

[www.biomedcentral.com/bmcmedimaging](http://www.biomedcentral.com/bmcmedimaging)

editorial@biomedcentral.com

Unofficial Impact Factor: 1.73

*BMC Medical Imaging* is an open access journal publishing original peer-reviewed research articles in the development, evaluation, and use of imaging techniques and image processing tools to diagnose and manage disease.

*BMC Medical Imaging* is indexed by PubMed, Medline, CAS, EMBASE, Scopus and Google Scholar.



**BMC  
Clinical Pharmacology**

[www.biomedcentral.com/bmcclinpharmacol](http://www.biomedcentral.com/bmcclinpharmacol)

editorial@biomedcentral.com

Unofficial Impact Factor: 1.68

*BMC Clinical Pharmacology* is an open access journal publishing original peer-reviewed research articles in all aspects of clinical pharmacology.

*BMC Clinical Pharmacology* is indexed by PubMed, Medline, CAS, EMBASE, Scopus, CABI and Google Scholar.

## THE BENEFITS OF PUBLISHING IN BIOMED CENTRAL'S JOURNALS:

### OPEN ACCESS

Access to the research published in our journals is free (not only on the journal's website but also via PubMed Central, the National Institutes of Health's electronic archive of full text articles, UK PubMed Central and other national archives), which means anyone with Internet access can read your research.

### HIGH VISIBILITY

Research articles are freely available to the entire global scientific and medical communities. Average full-text downloads are 250 per article per month.

### INCLUDED IN PUBMED

All research articles published in BioMed Central's journals are included in PubMed, so your work can be found and cited by researchers and clinicians around the world.

### YOU RETAIN COPYRIGHT

This means you can freely post your article on your personal or institutional homepage and e-mail it to friends and colleagues.

### PUBLISHED QUICKLY

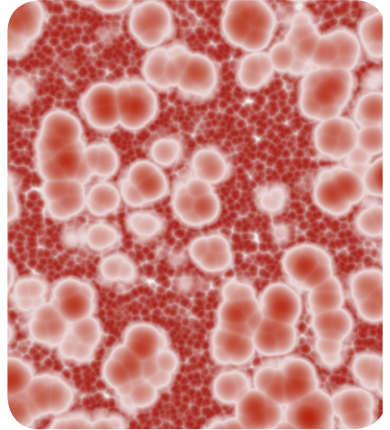
Online submission and peer review makes the whole process of publishing your research simple and efficient. Articles are published rapidly upon acceptance.

### NO SPACE CONSTRAINTS

Publishing online means unlimited space for figures, extensive data and video footage.

### GET YOUR ARTICLE PROMOTED

When appropriate, articles are promoted by e-mailing selected groups of researchers working in the same field or by informing the general and/or scientific press.



## CONTACT INFORMATION

Customer Services  
BioMed Central  
Customer Services Dept  
Floor 6  
236 Gray's Inn Road  
London, WC1X 8HB, UK

Tel: 0800 389 8136 (UK)  
Tel: +44 (0)20 3192 2009  
Fax: +44 (0)20 3192 2010  
Email: [info@biomedcentral.com](mailto:info@biomedcentral.com)

To submit your next article to a journal published by BioMed Central go to  
[www.biomedcentral.com/submit](http://www.biomedcentral.com/submit)