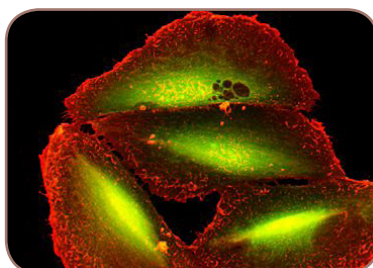
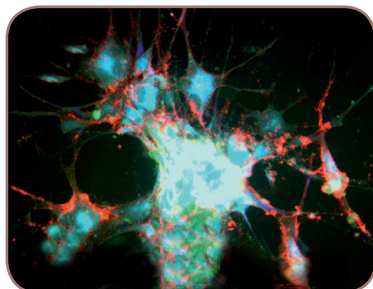
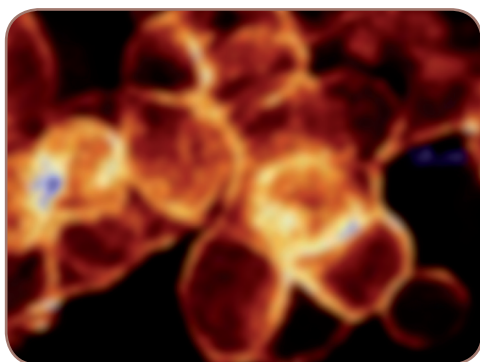
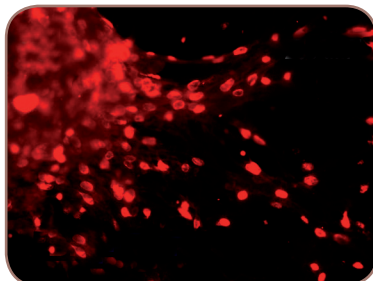
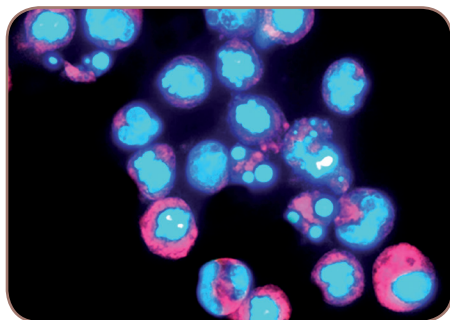


# Open Access Cancer Journals

OPEN  
ACCESS



## Open access Cancer journals

BioMed Central publishes a collection of peer-reviewed, open access journals, many of which publish content related to cancer. All journals are included in PubMed. For further details on any journal below, plus a full list of Editorial Board members, please visit the journal's website.



<http://breast-cancer-research.com>

[editorial@breast-cancer-research.com](mailto:editorial@breast-cancer-research.com)

**Editor-in-Chief: Lewis A Chodosh (USA)**

Impact Factor: 5.79

*Breast Cancer Research* is an international, peer-reviewed online journal, publishing original research, reviews, commentaries and reports. Research articles of exceptional interest are published in all areas of biology and medicine relevant to breast cancer, including normal mammary gland biology, with special emphasis on the genetic, biochemical, and cellular basis of breast cancer. In addition, the journal publishes clinical studies with a biological basis, including Phase I and Phase II trials.

*Breast Cancer Research* is indexed by PubMed, PubMed Central, MEDLINE, Thomson Reuters (ISI), CABI, CAS, Cinahl, EMBASE, Scopus and Google Scholar.



[www.molecular-cancer.com](http://www.molecular-cancer.com)

[editorial@molecular-cancer.com](mailto:editorial@molecular-cancer.com)

**Editor-in-Chief: Alan Storey (UK)**

Impact Factor: 3.78

*Molecular Cancer* is an open access, peer-reviewed online journal interested in attracting high-quality original research and reviews that present or highlight significant advances in all areas of cancer and related biomedical science.

*Molecular Cancer* is indexed by PubMed, PubMed Central, MEDLINE, Thomson Reuters (ISI), BIOSIS, CAS, EMBASE, Scopus, Current Contents and Google Scholar.



[www.biomedcentral.com/bmccancer](http://www.biomedcentral.com/bmccancer)  
editorial@biomedcentral.com  
Impact Factor: 3.15

*BMC Cancer* is an open access, peer-reviewed journal that considers articles on all aspects of cancer research, including the pathophysiology, prevention, diagnosis and treatment of cancers. The journal welcomes submissions concerning molecular and cellular biology, genetics, epidemiology, and clinical trials.

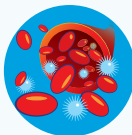
*BMC Cancer* is indexed by PubMed, MEDLINE, CAS, Scopus, EMBASE, CABI, Current Contents, Thomson Reuters (ISI) and Google Scholar.



[www.ro-journal.com](http://www.ro-journal.com)  
ro-journal@med.uni-muenchen.de  
**Editor-in-Chief: Claus Belka (Germany)**  
Impact Factor: 2.41

*Radiation Oncology* is an open access, peer-reviewed online journal that encompasses all aspects of research that impacts on the treatment of cancer using radiation. It publishes findings in molecular and cellular radiation biology, radiation physics, radiation technology, and clinical oncology.

*Radiation Oncology* is indexed by PubMed, PubMed Central, MEDLINE, Thomson Reuters (ISI), CAS, EMBASE, Scopus, Current Contents and Google Scholar.



[www.jhonline.org](http://www.jhonline.org)  
editor@jhonline.org  
**Editor-in-Chief: Delong Liu (USA)**  
Impact Factor: 2.93

*Journal of Hematology & Oncology* is an open access, peer-reviewed online journal that encompasses all aspects of hematology and oncology.

*Journal of Hematology & Oncology* is indexed by PubMed, PubMed Central, Medline, Thomson Reuters (ISI), CAS, EMBASE, Scopus, Current Contents and Google Scholar.



**Journal of Experimental &  
Clinical Cancer Research**

[www.jeccr.com](http://www.jeccr.com)

[editorial@jeccr.com](mailto:editorial@jeccr.com)

**Editor-in-Chief: Mauro Castelli (Italy)**

Impact Factor: 1.92

*Journal of Experimental & Clinical Cancer Research (JECCR)*, the official journal of the "Regina Elena" National Cancer Institute, is an open access publication providing a high-quality forum for basic, clinical and translational work in oncology.

*Journal of Experimental & Clinical Cancer Research* is indexed by PubMed, PubMed Central, MEDLINE, Thomson Reuters (ISI), CAS, EMBASE, Scopus and Google Scholar.



**CANCER CELL  
INTERNATIONAL**

[www.cancerci.com](http://www.cancerci.com)

[editorial@cancerci.com](mailto:editorial@cancerci.com)

**Editor-in-Chief: Denys Wheatley (UK)**

Unofficial Impact Factor: 1.90

Impact Factor due 2012

*Cancer Cell International* is an open access, peer-reviewed, online journal that considers research on cancer cells, originating largely from work using cell culture techniques. It serves the world as a publication of the International Federation for Cell Biology.

*Cancer Cell International* is indexed by PubMed, PubMed Central, Thomson Reuters (ISI), Biosis, CAS, EMBASE, Scopus and Google Scholar.



**HEREDITARY CANCER  
IN CLINICAL PRACTICE**

[www.hccpjournals.com](http://www.hccpjournals.com)

[hccp-uicc@ams.edu.pl](mailto:hccp-uicc@ams.edu.pl)

**Editors-in-Chief: Jan Lubinski (Poland),  
Rodney J. Scott (Australia), Rolf Sijmons  
(Netherlands)**

The official journal of the International Hereditary Cancer Center and published under the auspices of the International Union Against Cancer.

*Hereditary Cancer in Clinical Practice* is an open access journal that publishes articles of interest for the cancer genetics community and serves as a discussion forum for the development of appropriate healthcare strategies.

*Hereditary Cancer in Clinical Practice* is indexed by PubMed, PubMed Central, Thomson Reuters (ISI), CAS, EMBASE, Scopus and Google Scholar.



## WORLD JOURNAL OF SURGICAL ONCOLOGY

[www.wjso.com](http://www.wjso.com)

[chiefeditor@wjso.com](mailto:chiefeditor@wjso.com)

**Editor-in-Chief: Manoj Pandey (India)**

Impact Facto: 1.12

*World Journal of Surgical Oncology* is an open access, peer-reviewed, online journal publishing articles related to surgical oncology and its allied subjects such as epidemiology, cancer research, biomarkers, prevention, pathology, radiology, cancer treatment, clinical trials, multimodality treatment and molecular biology. Emphasis is placed on original research articles and clinical case reports. The journal will also provide balanced, extensive and timely review articles on selected topics.

*World Journal of Surgical Oncology* is indexed by PubMed, PubMed Central, MEDLINE, Thomson Reuters (ISI), EMBASE, Scopus, Current Contents and Google Scholar.



## Head & Neck Oncology

[www.headandneckoncology.org](http://www.headandneckoncology.org)

[editorial@headandneckoncology.org](mailto:editorial@headandneckoncology.org)

**Editors-in-Chief: Adel El-Naggar (USA),  
Colin Hopper (UK), Waseem Jerjes (UK),  
Tahwinder Upile (UK)**

*Head & Neck Oncology*, the official journal of the Head & Neck Optical Diagnostics Society, is an open access, peer-reviewed online journal that encompasses all aspects of clinical practice, basic and translational research on the aetiology, pathophysiology, diagnosis, assessment, management, follow-up and prognosis of patients with head and neck tumours.

*Head & Neck Oncology* is indexed by PubMed, PubMed Central, CAS, MEDLINE, Cinahl, Scopus, Embase and Google Scholar.



## INFECTIOUS AGENTS AND CANCER

[www.infectagentscancer.com](http://www.infectagentscancer.com)

[editorial@infectagentscancer.com](mailto:editorial@infectagentscancer.com)

**Editors-in-Chief: Franco M. Buonaguro  
(Italy), Sam Mbulaiteye (USA)**

Unofficial Impact Facto: 2.33

*Infectious Agents and Cancer* is an open access, peer-reviewed online journal that encompasses all aspects of basic, clinical and translational research providing an insight into the association between chronic infections and cancer.

*Infectious Agents and Cancer* is indexed by PubMed, PubMed Central, CABI, CAS, EMBASE, Scopus and Google Scholar.



## CLINICAL SARCOMA RESEARCH

[www.clinicalsarcomaresearch.com](http://www.clinicalsarcomaresearch.com)

[editorial@clinicalsarcomaresearch.com](mailto:editorial@clinicalsarcomaresearch.com)

**Editors-in-Chief: Paolo Casali (Italy),  
Angelo Paolo Dei Tos (Italy)**

*Clinical Sarcoma Research* publishes articles related to research on sarcomas, both of soft tissue and bone.

*Clinical Sarcoma Research* is indexed by PubMed, PubMed Central and Google Scholar.



## BMC Medicine

[www.biomedcentral.com/bmcmed](http://www.biomedcentral.com/bmcmed)

[bmcmecineditorial@biomedcentral.com](mailto:bmcmecineditorial@biomedcentral.com)

Impact Factor: 5.75

*BMC Medicine* - the flagship medical journal of the BMC series - publishes original research articles, commentaries and reviews in all areas of medical science and clinical practice. Other article types may be considered at the Editor's discretion.

*BMC Medicine* is indexed by PubMed, MEDLINE, BIOSIS, CAS, Scopus, EMBASE, Thomson Reuters (ISI), Current Contents and Google Scholar.



## BMC Medical Imaging

[www.biomedcentral.com/bmcmedimaging](http://www.biomedcentral.com/bmcmedimaging)

[editorial@biomedcentral.com](mailto:editorial@biomedcentral.com)

Unofficial Impact Factor: 1.73

*BMC Medical Imaging* is an open access, peer-reviewed journal that considers articles on the development, evaluation, and use of imaging techniques and image processing tools to diagnose and manage disease.

*BMC Medical Imaging* is indexed by PubMed, MEDLINE, CAS, Scopus, EMBASE and Google Scholar.



## BMC Pharmacology

[www.biomedcentral.com/bmcparmacol](http://www.biomedcentral.com/bmcparmacol)  
editorial@biomedcentral.com

*BMC Pharmacology* is an open access, peer-reviewed journal that considers articles on aspects of the discovery, design, uses, effects, modes of action and metabolism of chemically defined therapeutic and toxic agents.

*BMC Pharmacology* is indexed by PubMed, MEDLINE, BIOSIS, CABI, CAS, Scopus, EMBASE and Google Scholar.



## JOURNAL OF MEDICAL CASE REPORTS

[www.jmedicalcasereports.com](http://www.jmedicalcasereports.com)  
jmcreditorial@biomedcentral.com  
**Editor-in-Chief: Michael Kidd (Australia)**

*Journal of Medical Case Reports (JMCR)* is an open access, peer-reviewed online journal that will consider any original case report that expands the field of general medical knowledge. *JMCR* will consider research articles related to case reporting. Suitable research articles include but are not limited to: N of 1 trials, meta-analyses of published case reports, research addressing the use of case reports and the prevalence or importance of case reporting in the medical literature and retrospective studies that include case-specific information (age, sex and ethnicity) for all patients.

*JMCR* is indexed by PubMed, PubMed Central, Cinahl, Scopus and Google Scholar.



## BMC Research Notes

[www.biomedcentral.com/bmcrenotes](http://www.biomedcentral.com/bmcrenotes)  
editorial@biomedcentral.com

*BMC Research Notes* is an open access journal publishing scientifically sound research across all fields of biology and medicine, enabling authors to publish data sets, small-scale clinical studies, reports of confirmatory or negative results, updates to previous research, methodology, software tools and databases, short correspondence items and hypotheses.

*BMC Research Notes* is indexed by PubMed, Scopus and Google Scholar.

