

Additional File 6

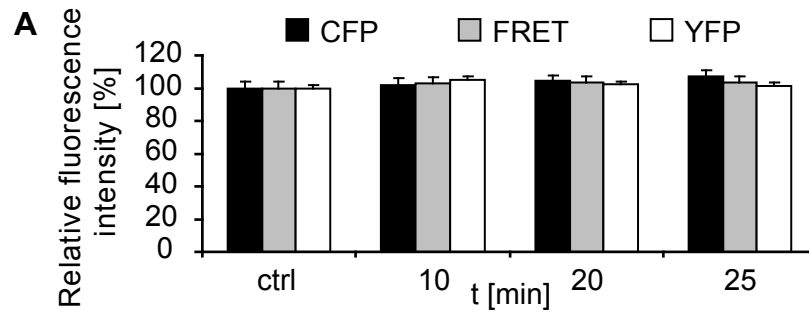


Figure Legend Additional File 6: Fast sampling during DEVDase FRET measurements does not result in photobleaching.

Cellular fluorescence in the CFP, FRET and YFP channels during the first minute of fast sampling was scaled to 100 % and compared to the average cellular fluorescence during minutes 10, 20, and 25. Data show means + s.d. from n = 8 untreated DEVDase FRET probe expressing HeLa cells which were confocally scanned at intervals of 4 sec.