



RESEARCH

Open Access

Characterization of a newly identified ETV6-NTRK3 fusion transcript in acute myeloid leukemia

Johanna M Kralik¹, Wolfgang Kranewitter¹, Hans Boesmueller², Renate Marschon¹, Gertraud Tschurtschenthaler^{3,4}, Holger Rumpold⁴, Kurt Wiesinger⁵, Martin Erdel¹, Andreas L Petzer⁴, Gerald Webersinke^{1*}

Abstract

Background: Characterization of novel fusion genes in acute leukemia is important for gaining information about leukemia genesis. We describe the characterization of a new *ETV6* fusion gene in acute myeloid leukemia (AML) FAB M0 as a result of an uncommon translocation involving chromosomes 12 and 15.

Methods: The *ETV6* locus at 12p13 was shown to be translocated and to constitute the 5' end of the fusion product by *ETV6* break apart fluorescence in situ hybridisation (FISH). To identify a fusion partner 3' rapid amplification of cDNA-ends with polymerase chain reaction (RACE PCR) was performed followed by cloning and sequencing.

Results: The *NTRK3* gene on chromosome 15 was found to constitute the 3' end of the fusion gene and the underlying *ETV6-NTRK3* rearrangement was verified by reverse transcriptase PCR. No RNA of the reciprocal *NTRK3-ETV6* fusion gene could be detected.

Conclusion: We have characterized a novel *ETV6-NTRK3* fusion transcript which has not been previously described in AML FAB M0 by FISH and RACE PCR. *ETV6-NTRK3* rearrangements have been described in secretory breast carcinoma and congenital fibrosarcoma.

Background

Chromosomal translocations resulting in fusion genes with transforming activity are fundamental in leukemia genesis. The *ETV6* gene (*ETS* variant gene 6) on the short arm of chromosome 12 encodes a transcriptional repressor of the *ETS* transcription factor family which is fundamental in adult hematopoiesis and plays a versatile role in hematological malignancies [1]. *ETS* family members are essential for a variety of cellular processes including proliferation, differentiation, migration and tissue remodeling, angiogenesis, apoptosis, as well as hematopoiesis and cell transformation [2,3]. *ETV6* is a 452 amino acid protein encoded by 8 exons containing the characteristic *ETS* domain at its carboxy terminus [4,5]. The *ETS* domain harbors DNA binding properties

but also mediates protein-protein interactions [1]. *ETV6* contains a helix-loop-helix (HLH) domain at its amino terminus which mediates homotypic oligomerization of *ETV6* molecules and also heterotypic interactions with other proteins [1,2]. *ETV6* is located on band 12p13 which is genetically unstable and thus susceptible to chromosomal rearrangements [6]. In recent years *ETV6* was shown to be involved in a variety of translocations associated with hematological malignancies of both myeloid as well as lymphoid origin [1,7]. The diversity of *ETV6* rearrangements is striking considering that the breakpoints do not cluster within a particular region of the gene [4].

Fusions between *ETV6* and phospho-tyrosinases (*PTKs*) are found in a variety of hematological diseases where the HLH domain is essential for the aberrant function of the fusion product, e.g. chronic myelomonocytic leukemia (CMML), AML, acute lymphoid leukemia (ALL) or myelodysplastic syndrome (MDS) [1]. In other

* Correspondence: gerald.webersinke@bhs.at

¹Laboratory of Molecular Biology and Tumorigenetics, Department of Internal Medicine I, Krankenhaus der Barmherzigen Schwestern, Seilerstaette 4, 4010 Linz, Austria

Full list of author information is available at the end of the article

cases ETV6 has been shown to contribute to the dysregulation of cellular functions by its ETS domain [8].

In the present study we identified the PTK NTRK3 as an ETV6 fusion partner. NTRK3 is a membrane anchored tyrosine kinase and functions as a receptor for the neurotrophin NT-3, regulating development and maintenance of the vertebrate nervous system [9,10]. NTRK3 does not only show expression in neural tissues but also in hematopoietic and epithelial cells [10].

The *NTRK3* gene is composed of 18 exons; the receptor kinase domain is encoded by exons 13 through 18. Alternative splicing of *NTRK3* leads to different isoforms, one of which is a truncated version of the full-length protein and does not possess a catalytically active kinase domain but exhibits exons 13b and 14b as its final two exons [9]. The catalytically active ETV6-NTRK3 fusion proteins have been previously detected in non-hematopoietic tumors, e.g. secretory breast carcinoma and congenital fibrosarcoma and in only one single case of hematological malignancy, i.e. an AML [11-13].

Methods

Patient profile

The 55-year-old male patient was transferred to our department with a newly diagnosed AML-M0 according to the FAB-classification. The bone marrow showed a 45% infiltration with AML-blasts, which stained positive for CD33, CD13, CD56 and CD7. Due to that, the patient received a treatment consisting of one induction of cytarabine and idarubicin followed by a second induction of cytarabine and mitoxantrone, a salvage therapy consisting of cytarabine and fludarabine followed by two cycles of gemtuzumab ozogamicine. The leukemic clone was refractory after each treatment cycle with an unchanged blast count in the bone marrow and the patient subsequently died after a short period of best supportive care.

Molecular and cytogenetic diagnostics

The patient was tested negative for mutations of the *NPM1* and *FLT3* genes and *AML1-ETO*- and *CBFb-MYH11* rearrangements.

Conventional karyotyping using GTG banding of unstimulated bone marrow cultures showed a pathological cell line exhibiting monosomy 7 and a translocation t(10;12)(q24;p13). An ETV6 rearrangement was assumed and could be demonstrated by Dual Color Break Apart FISH (LSI[®] ETV6 probe; Abbott Molecular) (Figure 1A). Whole chromosome paints (WCPs) (XCP Human Chromosomen Paints; Metasystems) revealed additional material of chromosome 12 on a second chromosome due to a cryptic translocation; chromosome 15 could be identified as a partner. (Figure 1B)

RACE PCR method

3' nested RACE PCR was performed with the GeneRacer[™] Kit (Invitrogen) according to the manufacturer protocol. Primers ETV6A/nested, ETV6B/nested and ETV6C/nested were used (ETV6 GenBank Accession number NM_001987, Version NM_001987.4, see Additional file 1 Table S1 for sequence information) with Platinum[®] *Taq* DNA Polymerase High Fidelity (Invitrogen; 5 U/ μ l).

Nested RACE PCR products of interest were excised from the gel and cloned using the TOPO TA Cloning[®] Kit (Invitrogen) according to the manufacturer's recommendations.

Amplification of cloned RACE PCR products was performed with 0,5 - 1,0 ng plasmid DNA, M13F/R primers and AmpliTaq Gold[™] DNA Polymerase (5 U/ μ l; Applied Biosystems). PCR products were purified using the ExoSAP-IT[®] system (USB) and subsequently sequenced using the BigDye[®] Terminator v1.1 Cycle Sequencing Kit (Applied Biosystems). Capillary electrophoresis was run in the ABI 3130 Genetic Analyzer (Applied Biosystems).

Reverse transcriptase PCR for expression testing

cDNA was prepared from total RNA by random hexamer priming (Amersham Biosciences) using M-MLV RT as indicated by the manufacturer (Promega).

For reverse-transcriptase PCR reactions cDNA was used undiluted with specifically designed primers for *ETV6* (ETV6 GenBank Accession number NM_001987, Version NM_001987.4) and *NTRK3* exons (GenBank Accession number NM_001012338, version NM_001012338.1 and GenBank Accession number NM_001007156, version NM_001007156.1) as listed in the Additional file 1 Table S1.

Results and Discussion

Genetic alterations play a key role in the pathogenesis of both solid tumors and hematological malignancies. In recent years the description of these alterations by molecular genetics provided crucial information for risk stratification and therapy, especially for acute leukemias. We describe a novel ETV6 fusion in an AML patient, which was confirmed by FISH and WCP (Figure 1) and could not be detected by routine chromosome banding techniques because it is highly cryptic. Therefore, the translocation is easily overlooked in conventional cytogenetics.

By RACE PCR and sequencing a truncated version of the *NTRK3* transcript was found in the forward sequencing reaction containing the polyA tail of the transcript, whereas the reverse reaction identified *ETV6* as the 5' part of the transcript. *NTRK3* is located on chromosome 15q25 which is affected in our patient as demonstrated

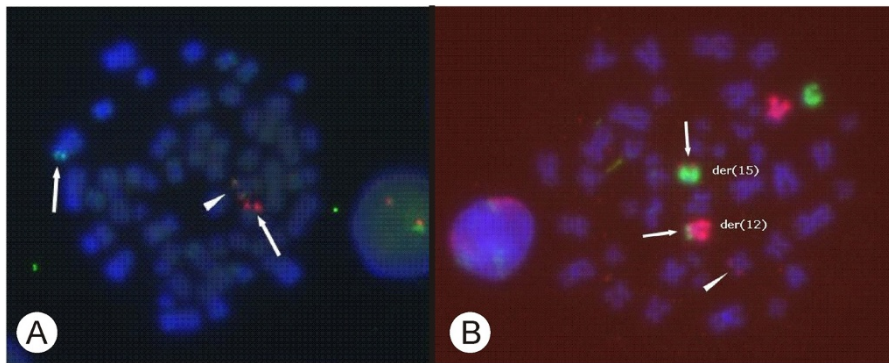


Figure 1 FISH experiments. 1a. *ETV6* break apart FISH. Arrows indicate the split signal for one allele, the arrow head marks the fusion signal of the wildtype allele. 1b. WCP of chromosomes 12 (red) and 15 (green). The arrows indicate the reciprocal translocation giving rise to derivative chromosomes der(12) and der(15). The arrow head marks the additional material of chromosome 12 on chromosome 10.

by WCP 12 FISH (Figure 1). Out of 142 sequencing reactions of RACE products, no partner gene on chromosome 10 could be detected. Whole chromosome paints of chromosomes 10 and 15 did not show any translocated signals (data not shown).

Expression of the truncated fusion transcript and possible isoforms was tested in nested RT-PCR experiments (see Figure 2). Results showed that *ETV6* and the alternatively spliced, truncated *NTRK3* clearly exist as a fusion transcript. Furthermore, the existence of *ETV6* being fused to catalytically active *NTRK3* was proven. RT-PCR amplification products of patient RNA were then

sequenced with appropriate primers. Based on these results the proposed entire fusion transcripts contain *ETV6* exons 1 through 5 fused to *NTRK3* exons 13b and 14b or *NTRK3* exons 13 through 18 (see Figure 3). Both *NTRK3* isoforms are in-frame fusion partners of *ETV6*. No *ETV6-NTRK3* transcripts could be detected in control cDNA from patients without *ETV6* rearrangement. The reciprocal translocation product (*NTRK3-ETV6*) was not detected on the RNA level when patient cDNA was amplified with different primer combinations suggesting its missing expression.

So far, catalytically active *ETV6-NTRK3* fusion proteins have been detected in a significant fraction of non-hematopoietic tumors, e.g. secretory breast carcinoma, congenital fibrosarcoma or mesoblastic nephroma [11,12,14]. Their transforming ability is based on constitutive activation of the *NTRK3* moiety with downstream activation of Ras- MAP kinase and phosphatidylinositol-3-kinase (PI3K)-AKT pathways [11]. Interestingly, the *ETV6-NTRK3* fusion has been reported in only one case of hematological malignancy, i.e. an AML (FAB M2) [13]. Here, we describe the presence of the *ETV6-NTRK3* fusion in a further AML case which, in contrast belongs to the FAB M0 subgroup. Furthermore, there are two striking differences between the previously detected hematological *ETV6-NTRK3* fusion and the one described here. In this context, one needs to point out that *ETV6* activity as a transcriptional repressor is achieved by at least two different domains: the HLH domain and the central region located between the HLH and ETS domain encoded by part of exon 4 and the entire exon 5 [1,2]. This central domain was shown to interact with corepressors, whereas the HLH domain represses gene transcription independently from corepressors [2,15]. As far as the differences are concerned, the fusion transcript identified in this study exhibits *ETV6* exons 1 through 5 in contrast to the previously

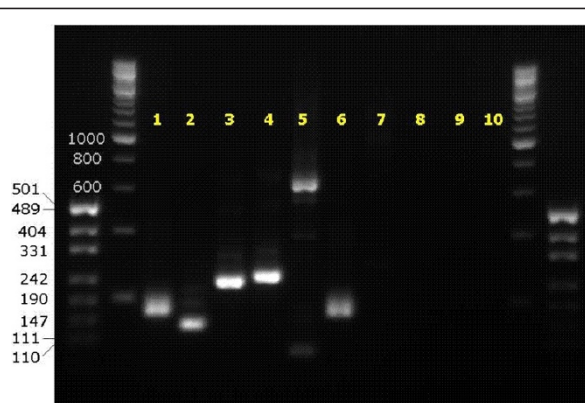
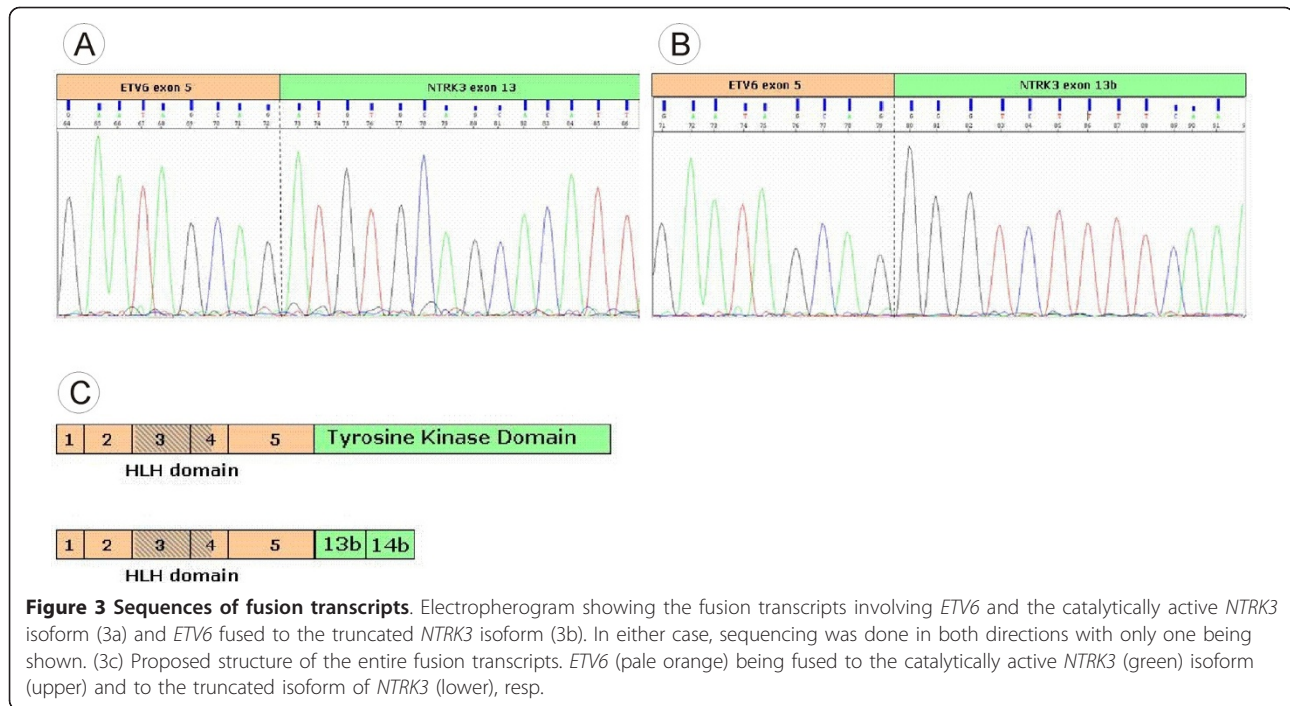


Figure 2 Nested RT-PCR of fusion transcripts. Results indicate that *ETV6* builds fusion transcripts with both the truncated and catalytically active *NTRK3* (lane numbers explained below). *ETV6-NTRK3* rearrangement (ABL1): 1 control PCR of patient with *ETV6-NTRK3*-rearrangement (ABL1); 2 *ETV6* exon5 and *NTRK3* exon14; 3 *ETV6* exon5 and *NTRK3* exon14; 4 *ETV6* exon5 and *NTRK3* exon14; 5 *ETV6* exon5 and *NTRK3* exon17; all *NTRK3* primers are specific for the tyrosine kinase domain. Controls: 6 control PCR of patient without *ETV6-NTRK3*-rearrangement (ABL1); 7 *ETV6* exon5 and *NTRK3* SequF (patient without *ETV6-NTRK3*-rearrangement); 10 water control. *NTRK3-ETV6* Rearrangement: 8,9 *NTRK3* exon12 (2 primers) and *ETV6* exon6.



published case which contained only the first four *ETV6* exons. Therefore, the entire central domain, made up partly of exon 4 and the entire exon 5, is still present and might enable further protein-protein interactions. The second difference is that *ETV6* was shown to be fused to the catalytically active isoform in the earlier report. In our case we demonstrated that alternative splicing of the transcribed *ETV6-NTRK3* gene takes place and gives rise to the truncated *NTRK3* isoform which is known to induce signaling that results in membrane ruffling and cellular protrusions, structural changes that support cell migration [16].

Unfortunately, insufficient patient material did not allow the investigation of *ETV6-NTRK3* expression on the protein level. The oncogenic activity of both variants remains to be revealed. Thereby one must keep in mind that fusion products containing *ETV6* have been shown to involve diversely regulated aberrant mechanisms. As far as kinase domain proteins are concerned, *ETV6* influences the fusion partner's activity via its HLH (dimerization) domain [8]. Regarding the *ETV6-NTRK3* fusion, data prove that the *NTRK3* kinase domain by itself does not provoke transformation activity. More precisely, it was demonstrated that NIH3T3 cells cannot be successfully transformed by *ETV6-NTRK3* chimeric proteins that still possess a perfectly operating *NTRK3* kinase domain but lack a functional *ETV6* HLH domain [17]. In other rearrangements, the *ETV6* promoter driving the transcription of the fusion gene is thought to confer oncogenic potential [8]. It is possible that the

two variants of fusion products identified in this study may function differently in cell transformation.

Conclusion

We described a novel *ETV6* fusion with a gene involved in neuronal development, *NTRK3*, in AML. The fusion gene has been previously detected in non-hematopoietic tumors, e.g. secretory breast carcinoma and congenital fibrosarcoma. Comparable to other molecular alterations in AML the *ETV6-NTRK3* fusion might be of prognostic relevance and should be investigated further in larger patient cohorts.

Additional material

Additional file 1: Table S1. Primer sequences used in RT-PCR and sequencing analyses.

Author details

¹Laboratory of Molecular Biology and Tumorigenetics, Department of Internal Medicine I, Krankenhaus der Barmherzigen Schwestern, Seilerstaette 4, 4010 Linz, Austria. ²Institute of Pathology, Krankenhaus der Barmherzigen Schwestern, Seilerstaette 4, 4010 Linz, Austria. ³Laboratory for Hematology, Department of Internal Medicine I, Krankenhaus der Barmherzigen Schwestern, Seilerstaette 4, 4010 Linz, Austria. ⁴Department of Internal Medicine I, Krankenhaus der Barmherzigen Schwestern, Seilerstaette 4, 4010 Linz, Austria. ⁵Institute of Laboratory Medicine BB&BS, Krankenhaus der Barmherzigen Schwestern, Seilerstaette 4, 4010 Linz, Austria.

Authors' contributions

KJM designed and performed research, analyzed data and wrote the paper, KW and MR contributed to molecular studies, TG performed FACS analysis,

RH and PA contributed clinical data, WK did bone marrow cytology, BHC did bone marrow histology, EM contributed to cytogenetics, WG designed the study, did cytogenetics, analysed the data and cowrote the paper. All authors read and approved the final manuscript.

Competing interests

The authors declare that they have no competing interests.

Received: 11 January 2011 Accepted: 15 March 2011

Published: 15 March 2011

References

1. Bohlander SK: **ETV6: A versatile player in leukemogenesis.** *Semin Cancer Biol* 2005, **15**:162-74.
2. Hart SM, Foroni L: **Core binding factor genes and human leukemia.** *Haematologica* 2002, **87**:1307-23.
3. Nordentoft I, Jorgensen P: **The acetyltransferase 60 kDa trans-acting regulatory protein of HIV type 1-interacting protein (Tip60) interacts with the translocation E26 transforming-specific leukaemia gene (TEL) and functions as a transcriptional co-repressor.** *Biochem J* 2003, **374**:165-73.
4. Poirel H, Lacronique V, Le Coniat M, Raffoux E, Daniel MT, Erickson P, Drabkin H, MacLeod RA, Drexler HG, Ghysdael J, Berger R, Bernard OA: **Analysis of TEL proteins in human leukemias.** *Oncogene* 1998, **16**:2895-903.
5. Baens M, Peeters P, Guo C, Aerssens J, Marynen P: **Genomic organization of TEL: the human ETS-variant gene 6.** *Genome Res* 1996, **6**:404-13.
6. Manola KN, Georgakakos VN, Margaritis D, Stavropoulou C, Panos C, Kotsianidis I, Pantelias GE, Sambani C: **Disruption of the ETV6 gene as a consequence of a rare translocation (12;12)(p13;q13) in treatment-induced acute myeloid leukemia after breast cancer.** *Cancer Genet Cytogenet* 2008, **180**:37-42.
7. Thandla SP, Ploski JE, Raza-Egilmez SZ, Chhalliyil PP, Block AW, de Jong PJ, Aplan PD: **ETV6-AML1 translocation breakpoints cluster near a purine/pyrimidine repeat region in the ETV6 gene.** *Blood* 1999, **93**:293-99.
8. Wlodarska I, La Starza R, Baens M, Dierlamm J, Uyttebroeck A, Selleslag D, Francine A, Mecucci C, Hagemeijer A, Van den Berghe H, Marynen P: **Fluorescence in situ hybridization characterization of new translocations involving TEL (ETV6) in a wide spectrum of hematologic malignancies.** *Blood* 1998, **91**:1399-1406.
9. Ichaso N, Rodriguez RE, Martin-Zanca D, Gonzalez-Sarmiento R: **Genomic characterization of the human trkC gene.** *Oncogene* 1998, **17**:1871-75.
10. Hisaoka M, Sheng WQ, Tanaka A, Hashimoto H: **Gene expression of TrkC (NTRK3) in human soft tissue tumours.** *J Pathol* 2002, **197**:661-7.
11. Tognon C, Knezevich SR, Huntsman D, Roskelley CD, Melnyk N, Mathers JA, Becker L, Carneiro F, MacPherson N, Horsman D, Poremba C, Sorensen PH: **Expression of the ETV6-NTRK3 gene fusion as a primary event in human secretory breast carcinoma.** *Cancer Cell* 2002, **2**:367-76.
12. Knezevich SR, McFadden DE, Tao W, Lim JF, Sorensen PH: **A novel ETV6-NTRK3 gene fusion in congenital fibrosarcoma.** *Nat Genet* 1998, **18**:184-7.
13. Eguchi M, Eguchi-Ishimae M, Tojo A, Morishita K, Suzuki K, Sato Y, Kudoh S, Tanaka K, Setoyama M, Nagamura F, Asano S, Kamada N: **Fusion of ETV6 to Neurotrophin-3 receptor TRKC in acute myeloid leukaemia with t(12;15)(p13;q25).** *Blood* 1999, **93**:1355-63.
14. Knezevich SR, Garnett MJ, Pysner TJ, Beckwith JB, Grundy PE, Sorensen PHB: **ETV6-NTRK3 gene fusions and trisomy 11 establish a histogenetic link between mesoblastic nephroma and congenital fibrosarcoma.** *Cancer Res* 1998, **58**:5046-48.
15. Chakrabarti SR, Nucifora G: **The leukemia-associated gene TEL encodes a transcription repressor which associates with SMRT and mSin3A.** *Biochem Biophys Res Comm* 1999, **264**:871-7.
16. Esteban PF, Yoon HY, Becker J, Dorsey SG, Caprari P, Palko ME, Coppola V, Saragovi HU, Randazzo PA, Tessarollo L: **A kinase-deficient. TrkC receptor isoform activates Arf6-Rac1 signaling through the scaffold protein tamalin.** *J Cell Biol* 2006, **173**:291-9.
17. Tognon CE, Mackereth CD, Somasiri AM, McIntosh LP, Sorensen HB: **Mutations in the SAM domain of the ETV6-NTRK3 chimeric tyrosine kinase block polymerization and transformation activity.** *Mol Cell Biol* 2004, **24**:4636-50.

doi:10.1186/1746-1596-6-19

Cite this article as: Kralik et al.: Characterization of a newly identified ETV6-NTRK3 fusion transcript in acute myeloid leukemia. *Diagnostic Pathology* 2011 **6**:19.

Submit your next manuscript to BioMed Central and take full advantage of:

- Convenient online submission
- Thorough peer review
- No space constraints or color figure charges
- Immediate publication on acceptance
- Inclusion in PubMed, CAS, Scopus and Google Scholar
- Research which is freely available for redistribution

Submit your manuscript at
www.biomedcentral.com/submit

